

## Configuration Manager v3.0 (C) 1994 Ad Astra Solutions

### Installation

Copy **ConfigMgr.Exe** to any place on your hard disk. **VBRUN300.DLL** and **THREED.VBX** need to be in your path or in the same directory with ConfigMgr.Exe. If you're running other Visual Basic applications, you might find these files already in your **Windows\System** directory (otherwise, it's a good place to put them). Follow the regular procedure for adding a new Program Item into any **Program Manager** group. You may, of course, run this program directly from the File Manager. For an explanation of **WHY** you might want to install this program, see the **ReadMe.Txt** file.

### Upgrading

Version 3.0 will completely retain all settings defined in previous versions. Should you accidentally delete your **ConfigMgr.Ini** file, upon startup, Version 3.0 will automatically backup your current **Autoexec.Bat** and **Config.Sys** to **AutoExec.CM\$**, **Config.CM\$** and assign this setting to Preset 1 (as shown in **Figure 1**).

### Execution

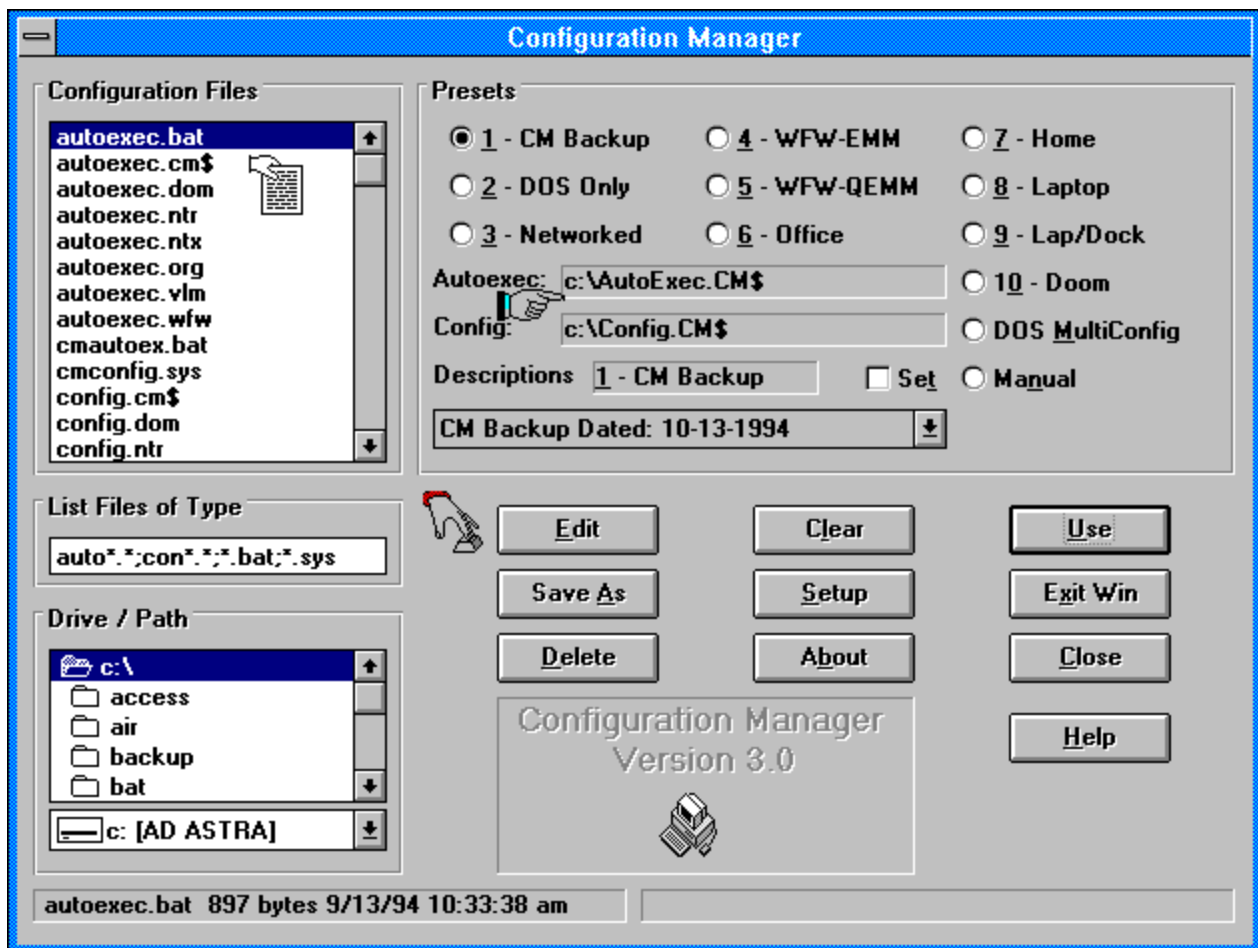


Figure 1

Since the file names **Autoexec.Bat** and **Config.Sys** are reserved for use by DOS, in the following discussion, an **Autoexec** and **Config** configuration refers to a version of these files tailored for a particular use, but saved under a different file name and/or extension.

The file window displays all of the available **Autoexec** and/or **Config** configuration files matching the file specifications shown in the **List Files of Type** box and located on the particular **Drive / Path**. Detailed information about a particular file appears in the lower left corner of the window. Turning a pair of files into a repeatable configuration involves nothing more than associating them with one of the ten user-definable preset buttons.

### **Defining Presets**

The process of associating a configuration with a preset button is straight forward. The particular **Autoexec** and **Config** files are selected and placed into the fields labeled **Autoexec** and **Config** in **Figure 1**, a short description or button label is defined for the button, and a longer description is defined for documentation purposes. There are two methods you can use to populate the **Autoexec** and **Config** fields: You can drag and drop file names onto these fields, or you can select another preset button to fill in their values. To drag and drop, click and hold the mouse down over the file name. When the hand-holding-document icon appears (shown in **Figure 1**), drag the file over to the **Autoexec** and **Config** fields. You can release the mouse when the pointing-hand icon (shown in **Figure 1**) appears. Hint: If you release the file anywhere over the **Presets** box, the **Autoexec** and **Config** fields are populated automatically. If the dropped file name has an extension of **.BAT** or begins with **AUTO**, it will move to the **Autoexec** field. If the dropped file name has an extension of **.SYS** or begins with **CON**, it will move to the **Config** field. The field to the right of **Descriptions** is the button label. The field below **Descriptions** is a long description of the configuration. When you click the **Set** check-box, these description fields will "unlock," allowing you to fill in or change their values. If you precede a character in the button label with an ampersand, e.g. Preset &2, the label will display as Preset 2, and you will be able to type Alt-<the character following the ampersand>, e.g. Alt-2 to move to this field. After entering a label and a description, click the desired **Preset** radio-button to associate these values with the particular button. To update or change a preset button's label or description, click the **Set** check-box and then that preset button. Once a button has been set, you may then select a particular configuration by either clicking its preset button or by using the drop-down list containing the long descriptions of the configurations.

For new users, Preset 1 is automatically assigned to a backup of the current **Autoexec.Bat** and **Config.Sys** files (as shown in **Figure 1**). This preset button can be overridden. The configuration files created for this purpose are named **AutoExec.CM\$**, **Config.CM\$**.

The **DOS MultiConfig** preset button is **NOT** user definable and will **ONLY APPEAR** if it has been defined via **Setup** (see **Customization**) and the computer was booted from **Novell DOS 7.0** or **MS DOS 6.0** or later.

## **Command Buttons**

Several of the command buttons have context sensitive operation. For purposes of this discussion, the system is in **Manual** selection mode when files are being selected (clicked or dragged) from the file selection window. The system is in **Preset** selection mode when a preset button has been chosen.

The command buttons have the following functions:

- Edit:** During **Manual** selection, brings the selected file into your editor. If drag and drop is enabled, you can also drop the selected file onto the button when you see the hand-pressing-button icon shown in **Figure 1**.
- During **Preset** selection, brings the **Autoexec** and/or **Config** selections into your editor.
- Save As:** Copies the file selected in the file window to a new name. If drag and drop is enabled, you can also drop the selected file onto the button when you see the hand-pressing-button icon shown in **Figure 1**.
- Delete:** During **Manual** selection, deletes the file selected in the file window. If drag and drop is enabled, you can also drop the selected file onto the button when you see the hand-pressing-button icon shown in **Figure 1**.
- During **Preset** selection, deletes both of the **Autoexec** and **Config** files as well as the preset button definition.
- Clear:** Clears the **Autoexec** and **Config** selections and **Description** fields and deletes the preset button definition. Note the difference between **Delete** and **Clear** deletes only the preset button definition, not the associated files. A **Clear:** during **Preset** selection is therefore equivalent to a **Manual Delete** of both configuration files followed by a **Clear** of the preset button.
- Setup:** Allows you to specify program options (see **Customization** below).
- About:** Configuration Manager version and Registration Information.
- Use:** Copies the **Autoexec** and **Config** selections over Autoexec.Bat and Config.Sys.  
Note: You don't have to assign a set of files to a preset button to **Use** them.
- Exit Win:** (Visible after pressing **Use**) Exits Windows and Reboots your system.
- Close:** Exits Configuration Manager (without rebooting).
- Help:** These instructions.

## Customization

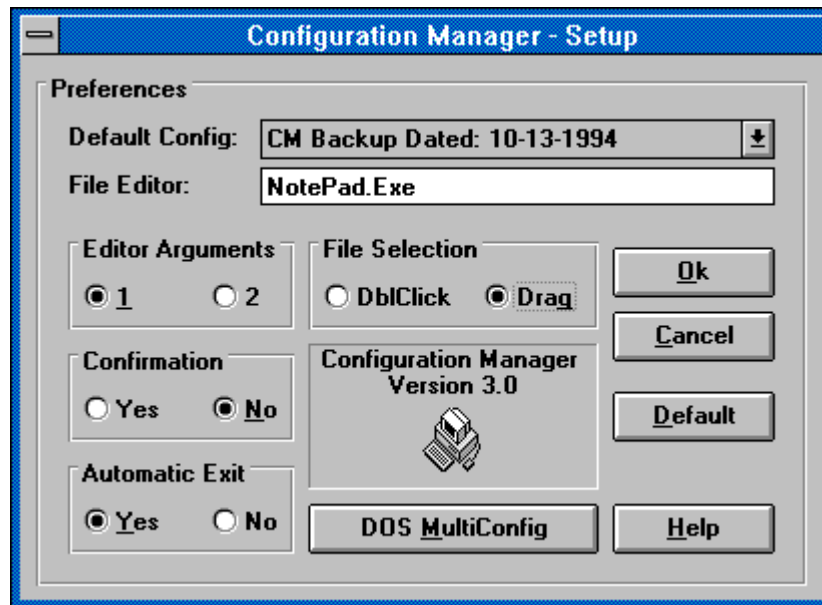


Figure 2

The fields shown in **Figure 2** have the following functions:

**Default Config** - This drop-down list contains all user-defined preset buttons. This list is used to specify which configuration will be the default in your **DOS MultiConfig** configuration. The default configuration will be the one that your machine will boot-up into if it is unattended and/or you make no choices from the startup menu. If **Default Config** is set to **(None)**, your machine will wait at the startup menu until a choice is made. See [Using DOS MultiConfig](#) below.

**File Editor** - In order to make changes to a particular configuration file, this field specifies the editor you wish to use. The Windows **Notepad** applet is the default. Notepad can only edit one file at a time, hence **Editor Arguments** is set to 1. If you have your own MDI capable editor, you can specify it here and set **Editor Arguments** to 2. This setting is used when you activate the **Edit** button described in **Figure 1**.

**Editor Arguments** - The number of files you can simultaneously edit when you activate the **Edit** button.

**Confirmation** - Obviously the very nature of this program involves the over writing of files. Until you're comfortable with its operation, leave Confirmation set to **Yes** so that you can answer the **Are You Sure?** question for anything which has the potential to be catastrophic, e.g. over writing files, deleting files, and deleting preset configurations.

**Automatic Exit** - As described earlier, when you press the **Use** button, the **Exit Win** button will appear. Until you're comfortable with Configuration Manager, leave the setting to the default of **No**. When set to **Yes**, you will automatically exit Windows and reboot upon pressing **Use**.

**File Selection** - During the discussion of preset selection, the following shortcut was presented: If the dropped file name has an extension of **.BAT** or begins with **AUTO**, it will move to the **Autoexec** field. If the dropped file name has an extension of **.SYS** or begins with **CON**, it will move to the **Config** field. If you normally use configurations which follow this rule, you can switch file selection from being a drag and drop operation (**Drag**) to a faster double-click operation (**DbiClick**). In this mode, simply double-click the selected file name to get it to move to the appropriate place. However, the other command buttons (in **Figure 1**) must also then be clicked for them to operate.

### Command Buttons

The command buttons shown in **Figure 2** have the following functions:

<b>Ok:</b>	Saves any setup changes to the ConfigMgr.Ini file and returns.
<b>Cancel:</b>	Aborts any setup changes and returns.
<b>Default:</b>	Restores all settings to their default values. Follow by <b>Ok</b> or <b>Cancel</b> .
<b>Help:</b>	These instructions.

### Using DOS MultiConfig

Pressing the **DOS MultiConfig** button causes the creation of special MS DOS 6.x or Novell DOS 7.0 multiconfiguration files and activates the **DOS MultiConfig** preset button. The files created by this process are **CMAutoEx.Bat** and **CMConfig.Sys** and are merely specialized **AutoExec.Bat** and **Config.Sys** files which provide you with a startup menu and a choice of configurations when your machine boots. A third file, **C\$AutoEx.Bat**, is created each and every time the machine boots from this configuration. Note, however, that just like the **DOS MultiConfig** preset button, this button will only appear if the computer was booted from **Novell DOS 7.0** or **MS DOS 6.0** or later. This mechanism is a precaution because older versions of these operating systems will choke terribly on the resulting configuration files. And one last note for **Novell DOS 7.0** users: Due to a limitation in the Novell DOS Config.Sys batch language, you'll only have access to your first nine presets, not all ten. And don't complain to Novell -- earlier this year they declared this a dead product line.

### DOS MultiConfig Special Considerations

There are three types of applications that will attempt to modify your **Autoexec.Bat** and **Config.Sys** files. The first type is called "MultiConfig Friendly." Currently, the only application known to be of this type happens to be MSDOS 6.X's **MEMMaker**. If you run this program, it will detect an MSDOS multiconfiguration setup and ask you which configuration you wish to optimize. Even though you can do this, you probably wouldn't want to because any changes it makes to your our **Autoexec.Bat** and **Config.Sys** file would have to be pasted back into the source configuration files or they would be overwritten the next time you use the **DOS MultiConfig** button. The recommendation is therefore to run **MEMMaker** against a single configuration, use **Save As** to preserve it, and then use the **DOS MultiConfig** button again.

The second type of application is called "MultiConfig Aware." Currently, the only program known to be of this type is the Windows **Setup** application. If you attempt to reinstall Windows while booted from an MSDOS 6.X multiconfiguration, when **Setup** gets to the point where it wants to modify your **Autoexec.Bat** and **Config.Sys** files, it will display a notice saying it detected a multiconfiguration setup, and it will save the changes it wants to make to a separate file for **YOU** to make later.

The third and final type of application is called "MultiConfig Oblivious," the typical DOS or (non-Microsoft) Windows application. This application comes with its own setup or install program that believes that **THIS** application is the most important application you will ever run. It therefore updates **Config.Sys** with the number of **Files** and **Buffers** it believes you should have and loads its drivers first. In **Autoexec.Bat**, it puts itself first in every **Path** statement it encounters, adds a cluster of environment variables, and usually puts itself and/or its drivers *after* the **WIN** statement. These programs will either become terribly confused

upon encountering a multiconfig setup or will screw it up horribly. Or both. Therefore, the recommendation for both the "Aware" and the "Oblivious" is to perform your install from a known/simple base configuration and use **Save As** to preserve it. Unfortunately, you still have to decide if these changes need to be propagated to your other configurations -- but that's the price we all pay for having multiple configurations in the first place. When you've got it all put back together, use the **DOS MultiConfig** button again. Sorry, Configuration Manager doesn't yet have an artificial intelligence engine to update your other configurations. Maybe by Version 10. Otherwise, consider yourself lucky if you don't have to maintain separate **System.Ini** files for different applications -- like some of us do ...

### Deinstalling

It's even easy to deinstall Configuration Manager. Delete **ConfigMgr.Exe** from your hard disk. Delete **ConfigMgr.Ini** from your Windows directory. Depending upon your usage, you may also find and delete the following files: **AutoExec.CM\$**, **Config.CM\$**, **CMAutoEx.Bat**, **CMConfig.Sys**, and **C\$AutoEx.Bat**. If you are not running any other Visual Basic applications, you can delete **VBRUN300.DLL** and **THREED.VBX**.

### Registration

Thank you for reading this far, but one last thing ... please support the **Shareware** concept! Shareware works for you, so please register this and all your shareware products. Once your payment has been received, you will receive by return mail a registration number which you will enter when you click the **Register** button on the **About** screen. Your registration number will disable the shareware notices and "nag" reminders to register. You will also be sent a disk containing the latest version of the program.

### Registration By Check

From the main window, click the **About** button followed by the **Order Info** button. Fill out the on-screen form and click the **Print** button. If after 30 days you continue to find this program useful, please mail the form and **\$20.00** to:

**Ad Astra Solutions**  
**P.O. Box 58164**  
**Houston, TX 77258-8164**

### CompuServe Registration

To have have the registration fee added to your CompuServe bill type **GO SWREG** at the ! prompt and follow the menus. Note that there will be a \$5.00 handling fee added to your order if you use this method, i.e. your total cost will be \$25.00.

### **Credit Card Registration**

You can order with MC, Visa, Amex, or Discover from Public (software) Library by calling 800-2424-PsL or 713-524-6394 or by FAX to 713-524-6398 or by CIS Email to 71355,470. You can also mail credit card orders to PsL at P.O.Box 35705, Houston, TX 77235-5705. Note that there will be a \$5.00 handling fee added to your order if you use this method, i.e. your total cost will be \$25.00 (or \$26.00 Canadian).

#### **ORDER ITEM #: 11650**

Please be sure to include your credit card number and expiration date on all credit card orders.

**\*\*\*\* THE ABOVE NUMBERS ARE FOR ORDERS ONLY \*\*\*\***

Any questions about the status of the shipment of the order, refunds, registration options, product details, technical support, volume discounts, dealer pricing, site licenses, etc, must be directed to:

**Ad Astra Solutions  
P.O. Box 58164  
Houston, TX 77258-8164**

Phone: 713-486-8740 x227  
CIS: 70372,2473  
Internet: 70372.2473@CompuServe.Com

To insure that you get the latest version, PsL will notify us the day of your order, and we will ship the product directly to you.